

## IN Carta Image Analysis Software

# View, classify and export results

### Navigate the data table

- Use the **Target (1)** drop-down to select what target data to display.
- Use the **View (2)** drop-down to select the aggregation method:
  - Single Target:** measures for each segmented object in the selected field-of-view (FOV).
  - Summary by FOV:** average values for each FOV.
  - Summary by Well:** average values for each well.
- The **Results (3)** drop-down displays prior results for the current data set. Results are identified by protocol, data set name, and date/time. Select prior results from the drop-down to reload them.

### Using the Chart Dashboard Panel

The **Chart Dashboard Panel** is a quick and easy way to display summary or cell by cell data graphically. Here are the most commonly used visualization tools and actions:

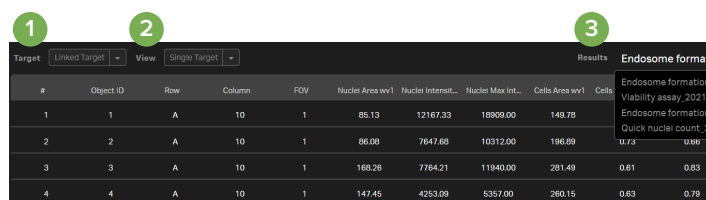
- Use the **Data Selection (4)** buttons in the **Chart Dashboard** to view **Plate**, **Well** or **FOV** data.

- Select the **Chart Type (5)** in the Chart Dashboard.

Note: Not all chart types are available with all data selections. See table at bottom for more information.

- Select chart parameters:

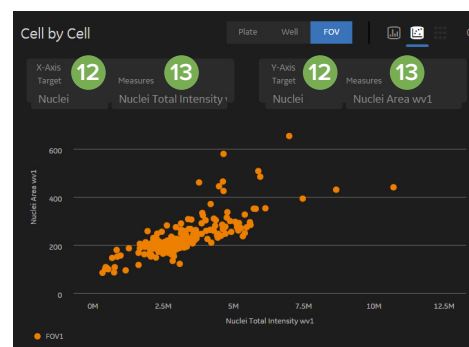
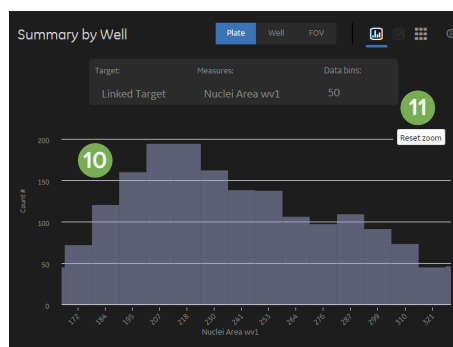
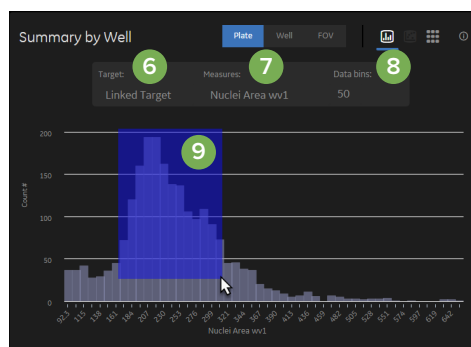
- The **Histogram (6)** displays cell count for a single measure.
  - Use **Target (6)** and **Measures (7)** drop-downs to change the data displayed.
  - Adjust **Data Bins (8)** as needed. Valid entries are 1 to 99.
  - Click and drag over an area of the histogram (9) to zoom in on that portion of the graph (10). Click **Reset zoom (11)** to return to the default display.
- The **Scatter Plot (12)** displays cell by cell data for a single FOV.
  - Use **Target (12)** and **Measures (13)** drop-downs to specify data to be plotted on the x- and y-axes.
  - Click and drag over an area of the scatter plot to zoom in on a particular area of the graph. Click the **Reset zoom** button to return to the default display.




#	Object ID	Row	Column	FOV	Nuclei Area ww1	Nuclei Intensity	Nuclei Max Intensity	Cells
1	1	A	10	1	85.13	12167.33	18909.00	149.78
2	2	A	10	1	86.08	7647.88	10312.00	196.89
3	3	A	10	1	168.26	7764.21	11940.00	281.49
4	4	A	10	1	147.45	4253.09	5357.00	260.15




	Histogram	Scatter Plot	Summary by Well
Plate	✓		✓
Well	✓		
FOV	✓	✓	



- The **Heat Map**  displays average data for a single measure from each well.
  - a. Use **Targets/Classes** and **Measures** drop-downs to change the data displayed.
  - b. Click and drag the arrows at the top and bottom of the **Heat Map Slider** to adjust min/max scaling.

## View linked data

IN Carta™ software enables users to interactively connect data points back to a segmented object. This allows you to explore outliers, trends, and perform visual quality control on analyzed data.

1. From the **Chart Dashboard**, set **Data Selection** to **FOV** (14) and **Chart Type** to **Scatter Plot** .
2. Use drop-downs to select **Target** and **Measures** (15) for the x- and y-axes.
3. In the **Data Table**, set **Target** to **Linked Target** (16) and **View** to **Single Target** (17).
4. Verify that the **View Port** is displaying the target identified in the **Scatter Plot** and that **Target Masks** are turned on (18).
5. Click on a point in the **Scatter Plot** (19), cell in the image (20), or row in the **Data Table** (21) to highlight corresponding data for that particular object.


## Classify data

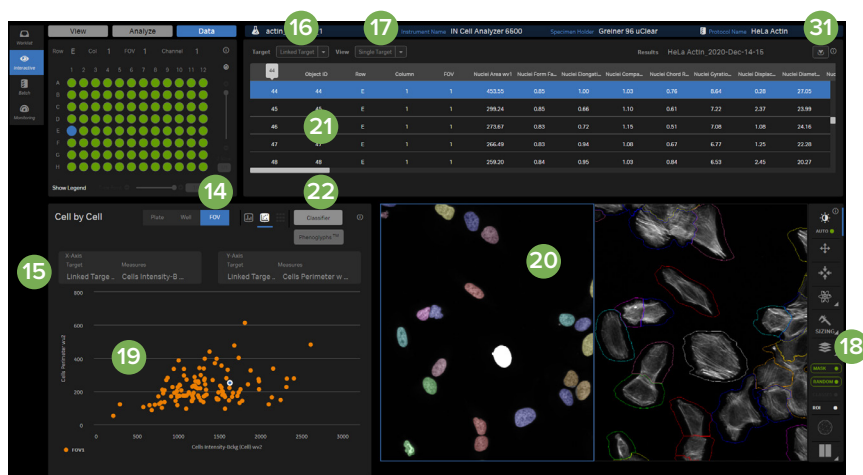
The **Classification** window is composed of the **Classes** navigation panel (23) and the **Histogram** (24). As classes

are added to the **Histogram**, the **Classes** navigation panel will display relationships between parent and daughter classes.

1. From the **Chart Dashboard**, click **Classifier** (22).
2. In the **Classification** window, select **Target** (25) and **Measures** (26) to use for classification.
3. Click the **+** (27) icon to add a gate to the histogram. Move the gate (28) horizontally to reposition. Up to five gates can be added to a single node.
4. In the **Classes navigation panel**, click on the **Pencil** icon to edit parent and daughter class names.
5. Double-click a node (29) in the **Classes navigation panel** to reload the histogram for that class alone. Use the **+** (27) icon to add daughter classes for this node.
6. When classification is complete, click **Save** (30) to classify data.

## Export Measurements

1. Click on **Download Results**  (31) in the upper right hand corner of the data table panel.
2. In the **Download Data** window, choose the **Data Type** to export.
  - **All Data** will export cell by cell measurements AND summary data.
  - **Summary** will export only summary data (FOV and whole well averages).
3. Click **Download**. Results will be saved to the Downloads folder as a single zip file.



### Contact Us

Phone: +1.800.635.5577  
 Web: [www.moleculardevices.com](http://www.moleculardevices.com)  
 Email: [info@moldev.com](mailto:info@moldev.com)  
 Check our website for a current listing of worldwide distributors.

### Regional Offices

USA and Canada +1.800.635.5577  
 United Kingdom +44.118.944.8000  
 Europe\* 00800.665.32860  
 China +86.4008203586  
 Taiwan/Hong Kong +886.2.2656.7585  
 Japan +81.3.6362.9109  
 South Korea +82.2.3471.9531  
 \*Austria, Belgium, Denmark, Finland, France, Germany, Ireland, Netherlands, Spain, Sweden and Switzerland