



MetaXpress® 6 Software Guide

Saving Individual Images

Date Revised 06/30/15 Version B



© 2012-2015. Trademarks property of Molecular Devices, LLC or their respective owners.
For research use only. Not for use in diagnostic procedures.

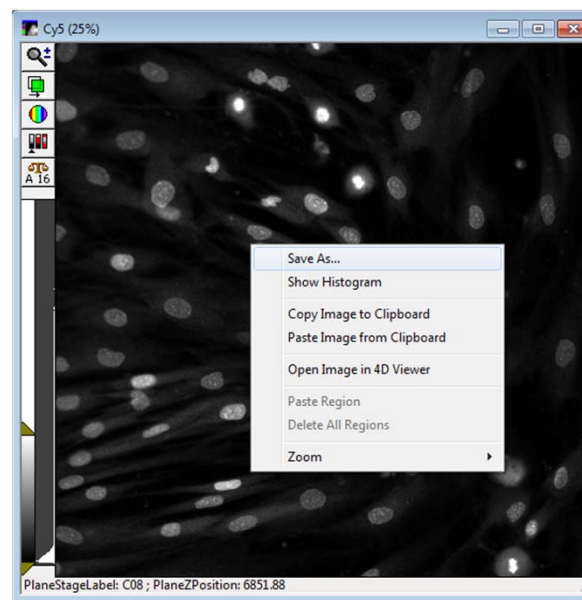
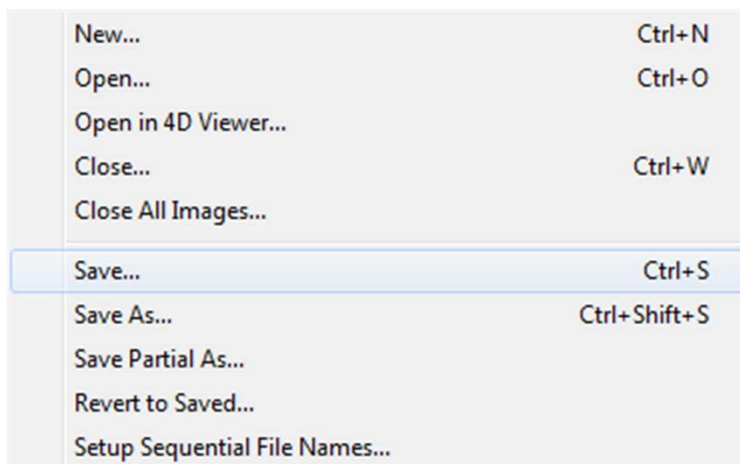
Chapter Purpose

The purpose of this chapter is to guide the user through saving individual images in various formats such as TIF, JPEG, BMP, STK, etc.



Saving Images

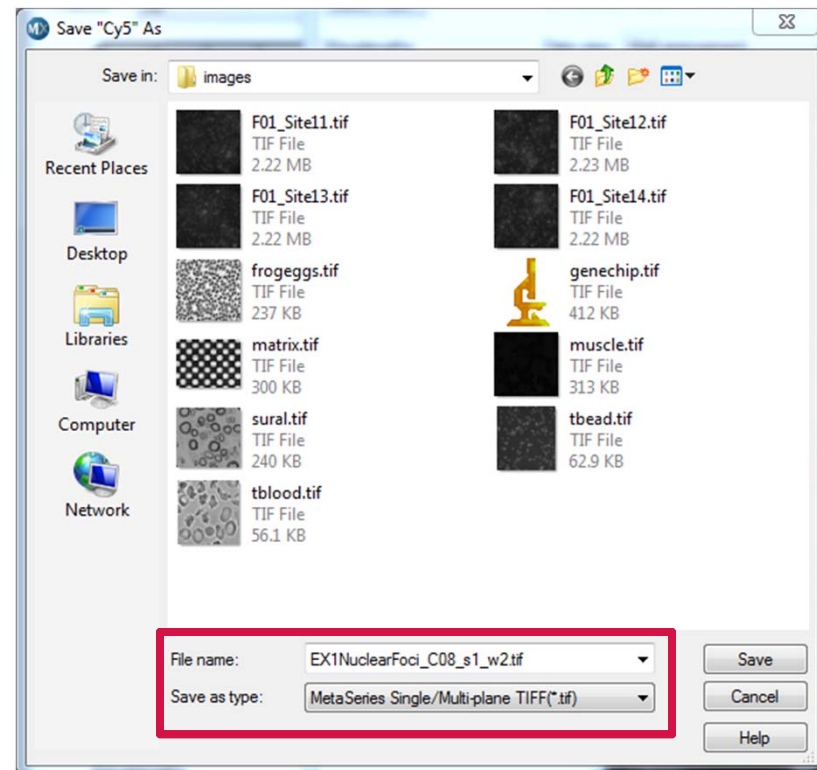
1. There are three ways to save an individual image to a disk
 - In the main toolbar, click on **File, Menu, Save** or **Save As**
 - Using the keyboard, **Ctrl + S** to Save or **Ctrl + Shift + S** for Save As
 - Right click on image window and select **Save As...**



A Note on Image Names and Format

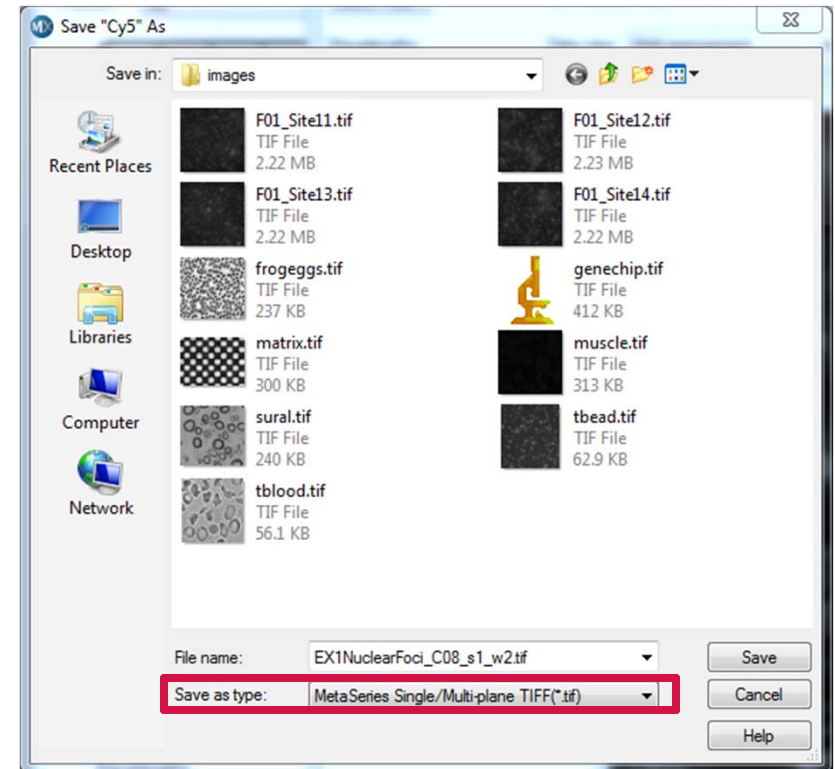
If sharing images with collaborators, technical support, or applications scientists:

- It is strongly suggested to maintain the MetaXpress style naming format as this will allow for easier import on another computer
- Save files as **MetaSeries Single/Multiplane TIFF (*.tif)**



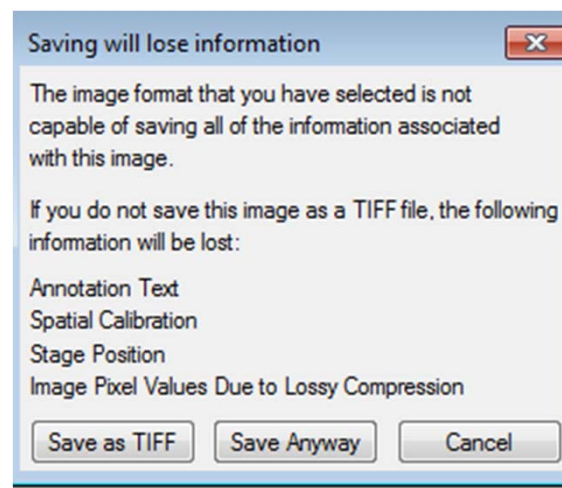
Saving As ...

2. To save images with another name or format, use the **Save As** dialog
3. Enter a name and select the type of image format from the drop-down menu
 - Images captured from the **Plate Acquisition Setup** or **Review Plate Data** dialogs will by default be named based on acquisition settings (i.e. Plate name, Well ID, wavelength number, Time Point, Z- Series, etc.)
 - The **MetaSeries Single/Multi-plane TIFF (*.tif)** format is the default type and should be used if saving images for analysis
 - If saving a stack of images, select **Metamorph Stack File Format (*.stk)**



Data Loss Warning

4. When saving images in another format such as JPEG or BMP, a warning will appear regarding the loss of data
 - JPEG and BMP files are compressed file types and result in the loss of pixel intensity, annotation (Metadata), spatial calibration, etc.
 - Saving as these file types is useful if you want to use the image for display purposes only (i.e. Microsoft PowerPoint)



Support Resources

- F1 / HELP within MetaXpress® Software
- Support and Knowledge Base: <http://mdc.custhelp.com/>
- User Forum: <http://metamorph.moleculardevices.com/forum/>
- Request Support: <http://mdc.custhelp.com/app/ask>
- Technical Support can also be reached by telephone:
 - 1 (800) 635-5577
 - Select options for Tech Support → Cellular Imaging Products → ImageXpress Instruments





ADVANCING PROTEIN AND CELL BIOLOGY