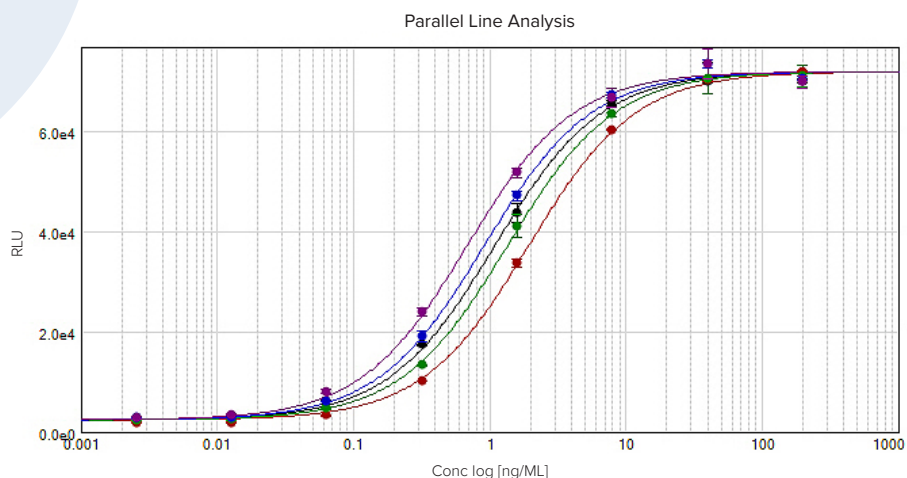




SoftMax Pro 7 Data Acquisition and Analysis Software

KEY FEATURES

- Over 160 ready-to-run protocols
- Supports traditional and unconventional microplate reader assays, including imaging cytometry and western blots
- Protocol sharing with a strong user community
- Spectral optimization wizard to maximize assay signal window (SpectraMax i3x and Paradigm readers only)



SoftMax Pro Software

SoftMax Pro[®] Software is the most published microplate reader control and microplate data analysis software package available to scientists.

The inclusive package of ready-to-run protocols, analysis algorithms, and 21 different curve fit options plus custom curve fits provides the full solution from data acquisition to analysis to publishing.

SoftMax Pro is designed to provide both the simplicity needed for new users and the flexibility and power required for advanced data analysis. Every step has been optimized, whether you are acquiring data from a Molecular Devices microplate reader or importing data from another source, to simplify your analysis and reporting.

The FDA 21 CFR Part 11 compliance tools available for regulated laboratories deliver a complete solution to minimize validation costs, provide end-to-end chain of custody, and eliminate the need to validate additional analysis software. Major data privacy and security improvements were made to support the latest GDPR regulations.

SIMPLE SETUP FLEXIBLE AND POWERFUL



SoftMax Pro Software simplifies data acquisition

Get a variety of options to initiate the measurement of a microplate. Select a pre-written protocol with included acquisition settings or simply set your own parameters.

- Pause and resume kinetic reads to run discontinuous kinetic assays that last hours, days, or even weeks
- Set up custom multitask kinetic assays using the drag-and-drop workflow editor
- Measure several different signal outputs simultaneously over time
- Use over 160 pre-written protocols with pre-configured assay parameters and analysis settings to read, analyze, and report without having to become an expert
- Acquire the best data for your assay using several read options including endpoint, kinetic, spectral scan, and well scan
- Obtain the best signal window for your fluorescence-based assays with the fluorescence spectral optimization wizard
- Normalize OD measurements to a 1 cm path length using SoftMax Pro's patented PathCheck® Technology to avoid inconsistent readings from fluctuations in pipetting
- Ensure your results are never lost with automatic data recovery



Import numerical data from any scientific instrument

Import data from acquisition sources other than a Molecular Devices microplate reader.

- Prepare data in the provided easy-to-use Excel import templates
- Import XML-based data directly for an automated workflow

**STANDARDIZE TO A SINGLE ANALYSIS PLATFORM
WITH THE SOFTMAX PRO 7 IMPORT FEATURE**



Flexible calculations and formulas

SoftMax Pro provides the most comprehensive source of microplate data analysis features available in a microplate reader software. Whether your need is simple curve fitting or extensive calculations across multiple plates, SoftMax Pro covers the full range of analysis capabilities.

- Utilize one of the 21 different curve fit options or create your own custom curve fit to graph your data in the best possible way
- Conduct Grubbs, Rosner, and ROUT outlier tests
- Apply standards across multiple plates to simplify cross-plate analysis and interpolation
- Easily automate common calculations like relative potency, EC_{50} , and Z factors
- Clone your plate data for multiple data reduction options, enabling you to test different analysis methods
- Perform custom, mathematical calculations

Image analysis

Analyze more than just standard microplate data. Acquisition and image-based data analysis may be done with the full set of SoftMax Pro analysis tools.

- Capture and analyze images generated from the SpectraMax[®] MiniMax™ Imaging Cytometer
- Count cells with StainFree Technology
- Recognize your cell types with supervised machine learning
- Acquire and analyze western blot images generated from the ScanLater Western Blot Detection Cartridge



Publish like a pro

Get your data ready to publish or report with flexible data output formats and tools.

- Present data in scatter, line, or bar graph format
- Print it the way you see it in SoftMax Pro
- Create reports with customizable notes sections with your own logo or images
- Export directly to a .xls (Excel) file or to XML for LIMS integration
- Easily save as a PDF file

GxP tools for FDA 21 CFR Part 11 compliance

SoftMax Pro 7 GxP Software provides FDA 21 CFR Part 11 compliance tools in conjunction with data acquisition and analysis for 20+ Molecular Devices microplate readers.



Powerful compliance tools

For laboratories in regulated environments, the SoftMax Pro GxP Software facilitates adherence to worldwide regulatory expectations with 21 CFR Part 11 compliance tools.

- Apply electronic signatures for verification, authorization, and approval of data files
- Track and record actions in the System Audit Trail
- Search and filter the System Audit Trail
- Control user licenses and access for increased security with powerful user management options
- Assign user permissions with a granular level of control
- Set up multiple administrators to manage separate project-based user groups
- Administer user accounts remotely
- Lockout log on failures and set additional security features including automatic idle log out and password aging
- Allow off-line usage and/or guest access
- Simplify and centralize site-license administration
- Use Windows Active Directory login option
- Track project documents in a controlled environment
- Share files with permission control in a Microsoft SQL database
- Auto export to PDF
- Export signed XML files



Faster, easier validation

Optional hardware and software validation tools are designed to speed and simplify the validation process by making it easier to demonstrate compliance of data collection and analysis. Available tools include:

- All-inclusive software validation package for SoftMax Pro GxP Software
- Instructions and worksheets for Installation Qualification (IQ)
- Instructions and worksheets for Operational Qualification (OQ) including important curve fits and routine calculations such as parallel line analysis
- Details on SoftMax Pro GxP Software features for implementation of FDA's 21 CFR Part 11 compliance requirements
- Validation plates for precise optical verification of microplate readers with detailed protocols and calculations
- On-site service for IQ-OQ and preventive maintenance by a certified field service engineer that includes:
 - A complete digital qualification report with calibration certification
 - Compliance to 21 CFR Part 11 requirements with electronic signatures and date/time stamps
 - Instant results with automated calculations built into the protocols for error-free procedure
 - Preventive maintenance to assure the best working condition for the microplate reader.



System requirements

Minimum requirements

- Computer with single-core processor, 2 GHz or faster
- Windows 7, 32-bit or 64-bit (x86 or x64)
- 2 GB RAM
- 500 MB of available hard disk space
- 1024 x 768 or higher resolution display
- RS-232 serial port or USB 2.0 port with a Keyspan USB-to-serial adapter
- CD drive or external USB drive
- .NET Framework 4.6*

Recommended requirements

- Computer with quad-core processor, 2 GHz or faster
- Windows 7, 32-bit or 64-bit (x86 or x64) or Windows 8, 32-bit or 64-bit (x86 or x64) or Windows 10, 32-bit or 64-bit (x86 or x64)
- 4 GB RAM**
- 1 GB of available hard disk space or more
- 1280 x 1024 or higher resolution display with 32-bit graphics display and 256 MB video RAM
- USB 2.0 port with a Keyspan USB-to-serial adapter
- CD/DVD drive or external USB drive
- Internet connection
- .NET Framework 4.6*

*.NET Framework 4.6 is installed automatically by the SoftMax Pro installer if necessary.

** If running on a virtual machine, Molecular Devices recommends a quad-core or faster processor with at least 6 GB RAM. For automation, 8 GB RAM is recommended.

SoftMax Pro 7 Features



- 160+ prewritten protocols*
 - Chromo-LAL
 - Antibody titration
 - Multi-peak identification
 - Equilibrium/percent binding
 - Michaelis Menten
 - Cell Titer-Glo
 - Parallelism test (Fieller's Theorem)
 - ELISA
 - FP – anisotropy
 - TRF/HTRF
 - DNA and RNA concentration
 - Bradford/BCA
 - Dual-Glo luciferase
 - ... and more!
- Read settings*
 - Endpoint
 - Kinetic
 - Spectrum scan
 - Well scan: horizontal, vertical, cross, fill
- Discontinuous kinetics
- Multitask kinetics
- Set multiple wavelengths per read
- Read partial plates*
- Multi-plate and multi-mode* protocols
- Real-time kinetic data reporting*
- Simulation mode
- Robotic and automation interface
 - Import LIMS template information
 - Export to a LIMS
 - Automate software functionality
 - Integrate with robots
- Imaging*
 - Western blot
 - Whole cell: transmitted light and fluorescence



- Sample ID lists / Plate templates
- Raw data**: text or XML files
(Import templates included)



- Display data as raw and/or reduced color map or gray scale
- View plate data in 3D graph
- Plate cloning for multiple reductions
- Kinetic reduction*
 - Vmax/time to Vmax
 - Onset time
 - Time at: max, min, 1/2 max
 - Area under curve
 - Slope
 - Custom formulas
 - ... and more!
- Curve fits
 - Custom curve fits (7.1)
 - No fit (scatter plot)
 - Linear
 - Semi-Log
 - Log-Log
 - Quadratic
 - Cubic
 - Quartic
 - Log-Logit
 - 5-Parameter
 - Brain Cousens
 - One-site specific
 - One-site specific plus nonspecific
 - Two-site specific
 - Two-site competition
 - Michaelis-Menten
 - Michaelis-Menten (two isozymes)
 - Exponential growth
 - Exponential decay
 - One-phase exponential association
 - One-phase exponential decay
 - Two-phase exponential
 - Gaussian
 - Cubic spline
 - Point-to-point
- Curve analysis
 - IC₅₀/EC₅₀
 - Interpolation/extrapolation
 - Custom weighting
 - Parallel line analysis
 - Display relative potency and R²
 - Integrated confidence interval display
 - Confidence/Prediction bands in the graph section (7.1)
 - Outlier tests (Rosner, ROUT) (7.1)
- Bar graphs
- Formula syntax helper
- Imaging*: cell viewing and counting



- Format notes sections and add images
- Custom report layout
- Set graph fonts and curve colors
- Cell images*
- Western blot images*

SoftMax Pro has been successfully connected to Labware and LIMS Solutions and others.

- Export graph as a .png file
- Export: text, Excel, or XML file
- Export in plate or list format
- Auto-export: .sda(x), text, Excel, or (signed) XML files (7.1)



SoftMax Pro GxP Software*** enables both data analysis and instrument control in automated environments and has been integrated by many leading robotics. including Agilent Technologies, Beckman Coulter, Caliper Life Sciences, Gilson, Hamilton, HighRes Biosolutions, Hudson Robotics.

- Electronic signatures
- System Audit Trail
- File lockdown after statement signing
- Login and password protected
- Password aging
- Account deactivation after login failure
- Central user account administration
- Multiple administrators
- Transfer user licenses
- Modify user and group permissions
- Software validation package

Custom protocol writing, advanced SoftMax Pro support, and GxP installation services are also available.

*Applies to selected plate reader models

**Requires SoftMax Pro Import Feature

***Requires SoftMax Pro GxP software package

Product	Annual subscription	Non expiring
SoftMax Pro Standard Software Windows 7/8/10 compatible	One year subscription to the latest version of SoftMax Pro 7. Includes one activation key which expires after one year. Annual renewal. Part number: SMP7 PROF SUBSCR SMP7 ACAD SUBSCR* *For verified academic institutions	Non-expiring license for the latest version of SoftMax Pro 7. Includes four activation keys. Part number: SMP7 PROF SMP7 ACAD* *For verified academic institutions
SoftMax Pro GxP Software Windows 7/8/10 compatible		Latest version of SoftMax Pro 7 GxP. Includes tri-fold CD package with GxP Admin 3.0, SoftMax Pro 7.1 GxP, Validation Pack CDs, GxP User License certificate, SoftMax Pro 7.1 GxP Product Activation Key Sheet, and Compliance certificate. Part number: SMP7X GxP* User license part number: SMP7 GxP License *Requires purchase of any amount of user licenses (minimum three). Tiered pricing is based on number of user licenses purchased.
SoftMax Pro Importer XLS Requires SoftMax Pro 6.4.1 or higher	One year subscription to enable import of data into SoftMax Pro from an Excel-based template. Includes one activation key which expires after one year. Annual renewal. Part number: SMP.IMPORT.XLS	
SoftMax Pro Importer XLS and XML Requires SoftMax Pro 6.4.1 or higher	One year subscription to enable import of data into SoftMax Pro from an Excel-based template or XML file. Includes one activation key which expires after one year. Annual renewal. Part number: SMP.IMPORT.XLS.AND.XML	Non-expiring license to enable import of data into SoftMax Pro from an Excel-based template or XML file. Includes one activation key for use on one computer. Part number: SMP.IMPORT.XLS.XML.NONEXP

Contact Us

Phone: [+1.800.635.5577](tel:+18006355577)
 Web: www.moleculardevices.com
 Email: info@moldev.com

Check our website for a current listing of worldwide distributors.

Regional Offices

USA and Canada +1.800.635.5577	China (Beijing) +86.10.6410.8669	Japan (Osaka) +81.6.7174.8331
United Kingdom +44.118.944.8000	China (Shanghai) +86.21.3372.1088	Japan (Tokyo) +81.3.6362.5260
Europe* 00800.665.32860	Hong Kong +852.3971.3530	South Korea +82.2.3471.9531

*Austria, Belgium, Denmark, Finland, France, Germany, Ireland, Netherlands, Spain, Sweden and Switzerland