

MINI CASE STUDY

Manual vs. Automated Picking



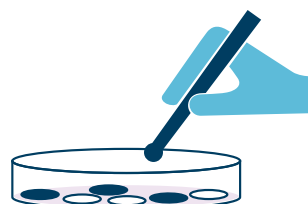
Manual colony picking? It's slow, biased, and bad for your bugs. The QPix® FLEX Microbial Colony Picker automates the process so you can protect viability, pick with precision, and actually recover the organisms that matter. Because in microbiome research, the right colony makes all the difference.

Manual Colony Picking

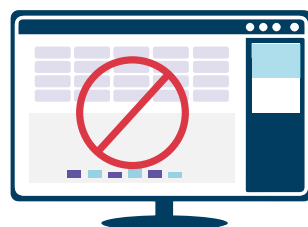
Anaerobic plates removed from hypoxic chamber



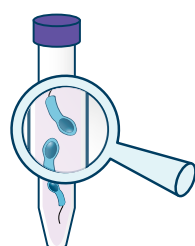
Manual, visual selection by colony morphology



Low-quality data, failed sequencing



Target organism missed

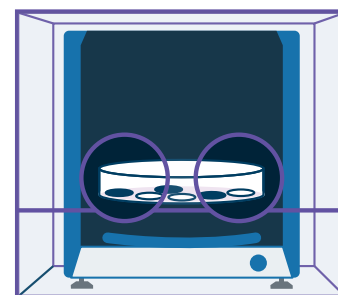


13 hours

TIME SAVINGS

6 hours

Automated Picking with QPix FLEX



Plates stay inside hypoxic environment

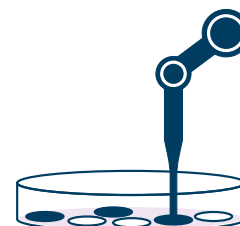
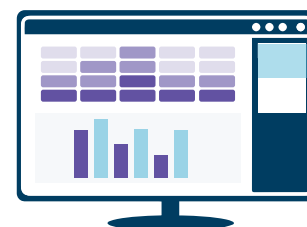
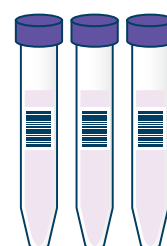


Image-guided selection using the high-resolution color camera



Customizable colony selection criteria (size, shape, color)



High-quality, reproducible data

Save time. Save samples. Get better data.

Learn more at info.moleculardevices.com/cwa/qpix/allnewflex

