



Dual-Color Luminescence (BRET²) SpectraMax Detection Cartridge

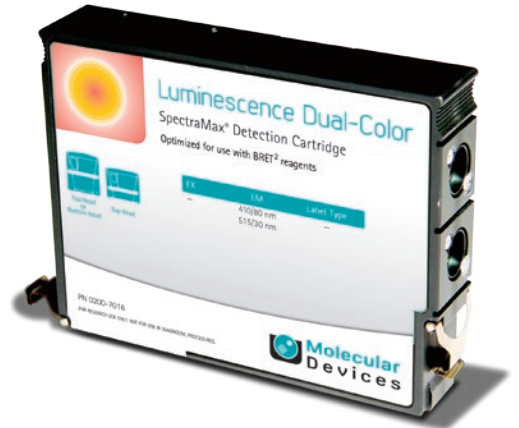
Dual-Color Luminescence SpectraMax[®] Detection Cartridges for SpectraMax[®] i3 and Paradigm[®] Systems utilize a patent-pending design that isolates each well to provide optimal performance for chemiluminescence applications, including BRET². In addition, the standard dual emission design gives most accurate results in short overall read time.

Dual-Color Luminescence (BRET²) SpectraMax Detection Cartridge

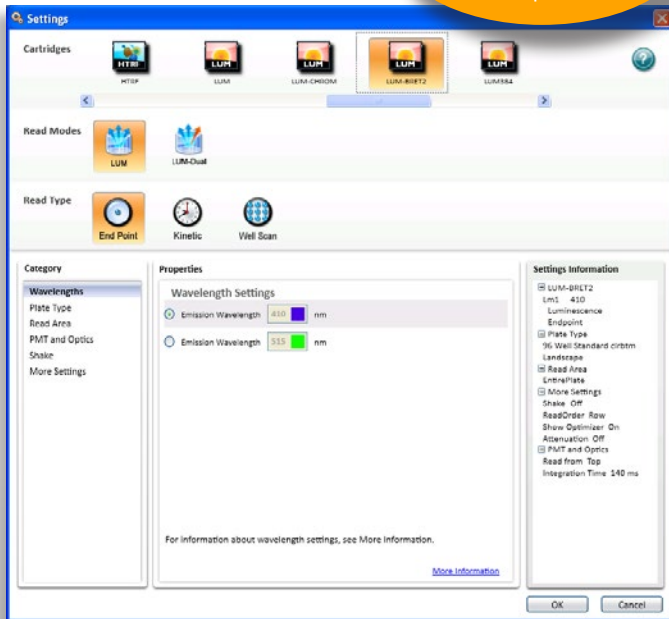
Description

Compatible systemsSpectraMax i3 and Paradigm Readers
 Part number0200-7016
 Mounting Top read or bottom read†
 Cartridge size 1 position
 Emission range 410/80 nm, 515/30 nm
 † Bottom mounting for SpectraMax Paradigm Readers only.

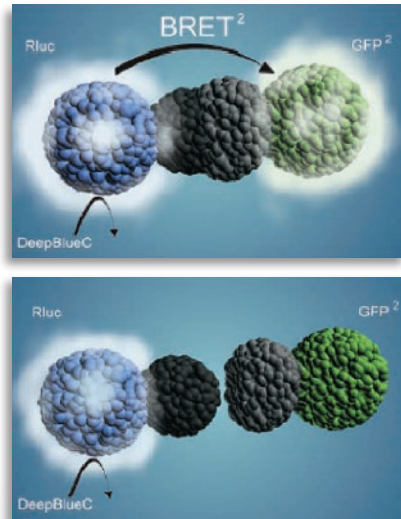
Designed to provide optimal performance when used with PerkinElmer's BRET² reagents. When inserted, the template protocols are enabled with predefined data reduction such as blank subtraction, green to blue ratio, and determination of the Z' factor.



Fully enabled protocols reduce setup time



Principle of BRET²



www.blossombio.com.tw/Products/BRET2.html

Contact Us

Phone: +1-800-635-5577
 Web: www.moleculardevices.com
 Email: info@moldev.com
 Check our website for a current listing of worldwide distributors.

Regional Offices

USA and Canada +1-800-635-5577
 Brazil +55-11-3616-6607
 China (Beijing) +86-10-6410-8669
 China (Shanghai) +86-21-3372-1088
 Germany 00800-665-32860

Japan (Osaka) +81-6-7174-8831
 Japan (Tokyo) +81-3-6362-5260
 South Korea +82-2-3471-9531
 United Kingdom +44-118-944-8000

