

Advanced Workflow Engineering Solutions

Tailor our instruments. Transform your research.

BENEFITS

- Purpose-built solutions for your specific application need
- Tested for your biological applications
- Shorter development cycle for novel applications
- Global service and support – from consultation and feasibility testing through implementation of *your* solution



When standard doesn't fit, customize our instruments — not your research.

Advanced Workflow Engineering Solutions (AWES) is the Molecular Devices service team of in-house experts who can skillfully customize our instruments to optimize workflows for your specific needs.

Our Advanced Workflow Engineering Solutions (AWES) team provides:

- Comprehensive package of services from consultation through implementation
- Complete setup and support for your fully integrated workflow
- Validation testing with actual biological samples
- In-house expertise for both application needs and instrument design
- Global service and support with over 30 years of experience in life science research

Explore modifications with AWES

The AWES team is available to you to explore these modifications. Price, time to deliver, and specifications will vary based upon mutually agreed requirements. Solution requirements may cause adjustment to standard performance.



QPix™ Microbial Colony Pickers & ClonePix 2 Mammalian Colony Pickers

- **Hardware customization** – from custom labware to unique transfer pins to enhanced optical systems
- **Software customization** – modify software to match specific API needs, enable unique workflow capability, integrate into LIMS/ data management systems, customize UI, control custom designed hardware or modify imaging analysis criteria
- **Biological validation** – we'll reproduce and test in-house with actual biological samples

The Molecular Devices Advanced Workflow Engineering Solution (AWES) team has successfully tailored QPix and ClonePix 2 colony pickers for some customers to integrate with other lab components such as incubators, liquid handlers, and robotics for a fully automated work cell.



Microplate Readers

- **SoftMax® Pro Software customization** – customize data transfer import/export, customize for GXP, create unique protocols, and much more
- **Hardware customization** – plate loading and special plate handling requirements, custom cartridges

The Molecular Devices Advanced Workflow Engineering Solution (AWES) team has successfully tailored microplate readers for some customers to customize software capabilities and to integrate with other lab components such as incubators, liquid handlers, and robotics for a fully automated work cell.

Solutions provided by AWES are subject to Molecular Devices Custom Products Purchase Terms available at www.moleculardevices.com/custom-products-purchase-terms.



ImageXpress® High-Content & Cellular Imaging Systems

- **Software customization** – modify software to match specific API needs, enable unique workflow capability, integrate into LIMS/data management systems, customize UI, control custom designed hardware
- **Biological validation** – we'll reproduce and test in-house with actual biological samples

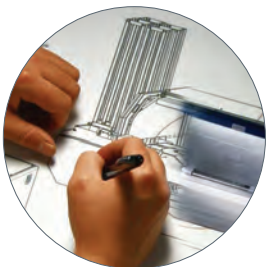
The Molecular Devices Advanced Workflow Engineering Solution (AWES) team has successfully tailored the ImageXpress Micro system for some customers to include a variety of light engines to address ultra violet (UV) to near infrared (NIR) applications, environmental control with gas mixers for CO₂ and Hypoxia, fluidics with simultaneous imaging and dispensing as well as integration of other lab components such as incubators, liquid handlers, and robotics for a fully automated work cell.



CloneSelect™ Imager

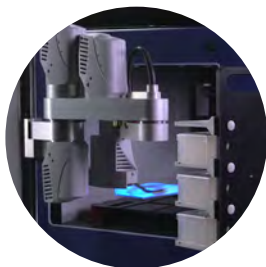
- **Software customization** – leverage fluorescence imaging to automatically identify single cells
- **Hardware customization** – modify hardware to enable fluorescence imaging capabilities and to handle custom labware

The Molecular Devices Advanced Workflow Engineering Solutions (AWES) team has successfully tailored the CloneSelect Imager for some customers to include fluorescent detection for expanding monoclonality verification and cell-based assay workflow options.



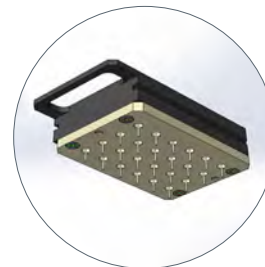
Turnkey service

Our AWES team works with you to understand your needs and challenges. We share our application and instrumentation expertise and propose solutions. We then test the chosen solution in-house to ensure it works for your application. Upon validation, we install the system in your lab and follow through onsite to support you as you advance your research.



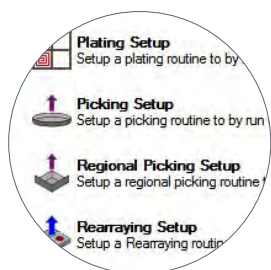
Scale-up automation

We adapt your system to seamlessly integrate into larger automation workstations. AWES can design and test the whole workstation from scratch, incorporate it into an existing automated solution, or deliver a customized, automation-ready system for future integration.



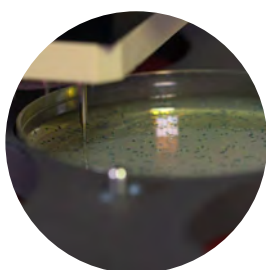
Hardware customization

From custom labware to unique transfer pins to special handling requirements, we'll work to find a solution and prove it through validation.



Software customization

We can modify the software to match specific Application Programming Interface (API) needs, enable unique workflow capability, integrate into LIMS or data management systems, customize a User Interface (UI), and of course control any custom designed hardware.



Biological validation

Our application scientists work with you to understand your process and biological requirements, so that we can reproduce and test the actual performance in-house prior to shipment.



Global service and support

With over 30 years of experience in the life science industry, you can count on Molecular Devices to deliver quality products and worldwide support.

Solutions provided by AWES are subject to Molecular Devices Custom Products Purchase Terms available at www.moleculardevices.com/custom-products-purchase-terms.

Contact Us

Phone: +1.800.635.5577
Web: www.moleculardevices.com
Email: info@moldev.com

Check our website for a current listing of worldwide distributors.

Regional Offices

USA and Canada
+1.800.635.5577
United Kingdom
+44.118.944.8000
Europe*
00800.665.32860

China (Beijing)
+86.10.6410.8669
China (Shanghai)
+86.21.3372.1088
Hong Kong
+852.2248.6000

Japan (Osaka)
+81.6.7174.8331
Japan (Tokyo)
+81.3.6362.5260
South Korea
+82.2.3471.9531

**Austria, Belgium, Denmark, Finland, France, Germany, Ireland, Netherlands, Spain, Sweden and Switzerland*