

Updating the Discovery-1 Registration Code to Enable New Modules

Document ID
D50023

Product
Discovery-1

Created
03-Aug-2004

Last Reviewed
06-Aug-2004

Abstract

This document describes how to update the registration code of an existing Discovery-1 system in order to enable a newly purchased Application module(s). In order to enable new modules, the Discovery-1 software must be reinstalled using the new registration code you received when you purchased the module(s). After reinstalling with the new code, you must also install the latest software update and activate the new module(s).

Notes:

- This document assumes you have a Discovery-1 6.1 installation CD, and a floppy disk containing your new registration code (supplied by UIC).
- This document assumes you are using a computer with internet access in order to download the latest software update from the Discovery-1 support site.
- Ensure that you reinstall the Discovery-1 application into the same location where it currently is installed (for example, C:\MM).
- You will need to know your System ID to reinstall Discovery-1 and access the Discovery-1 support site.
- You must have Windows Administrator privileges on your Discovery-1 computer to perform the upgrade. Consult your System Administrator for more information.
- Reinstalling the Discovery-1 application will not cause you to lose existing configuration settings or data. However; UIC recommends making a backup of your MM folder before proceeding.

Instructions

The following procedures are explained in this document and must be completed in the order shown below:

1. Reinstalling Discovery-1 Using the New Registration Code
2. Downloading the Latest Software Update
3. Installing the Software Update
4. Activating the Module(s)

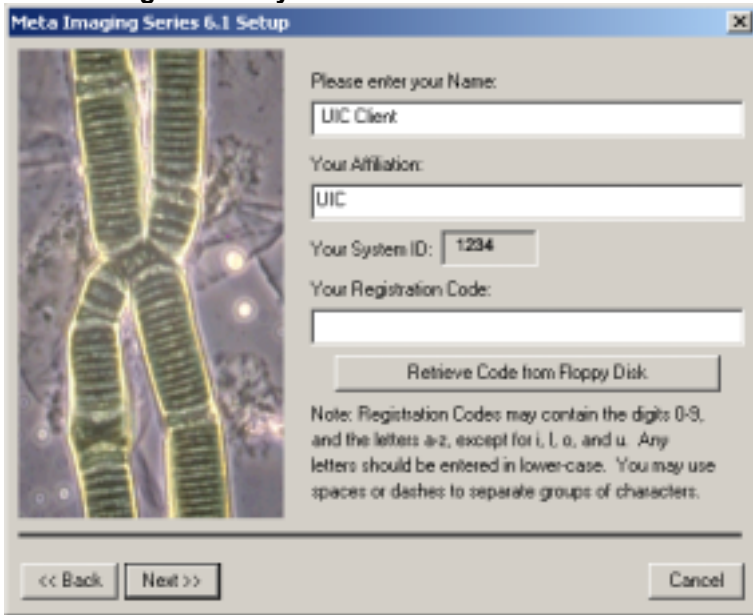
Reinstalling Discovery-1 Using the New Registration Key

Complete the following steps to reinstall Discovery-1 with your new registration key:

1. Load the Meta Imaging Series Version 6.1 CD into your DVD/CD-ROM drive. The Installer screen opens.
2. Click *Install Meta Imaging Series 6.1*.
3. Click Proceed, then Accept. The registration dialog box opens, as shown in Figure 1:

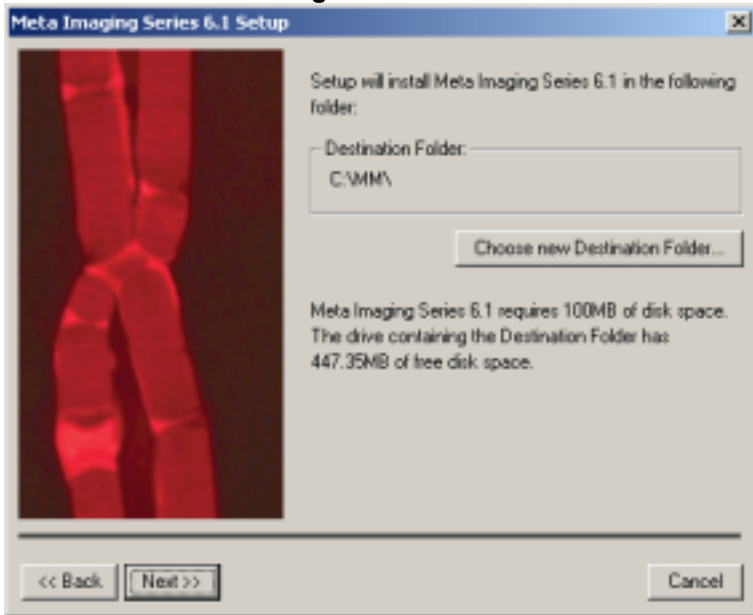
Keywords: modules, registration, v5, v6
Issue Type: geninfo mods admn

Figure 1
Reinstalling Discovery-1



4. Enter your name and affiliation.
5. Put the floppy disk containing your new registration code in your floppy drive and click *Retrieve Code from Floppy Disk*. The code is entered into the *Your Registration Code* field.
6. Click *Next*. The Destination folder dialog box opens, as shown in Figure 2:

Figure 2
Destination Folder Dialog Box



7. Check that the *Destination Folder* Path is the same path that Discovery-1 is currently installed in; this ensures that the existing installation is overwritten.
8. Click *Next*, then *Next* again to open the installation dialog box.
9. Review your installation options and click *Install* to begin installing Discovery-1 with the new registration code.

Discovery-1 Online Support

10. After the installation is complete, click *Close* to exit the installation program. The Meta Imaging Series Administrator opens.
11. Close the Meta Imaging Series Administrator.

Downloading the Latest Software Update

Complete the following steps to download the latest software version:

1. Open a web browser and go to <http://support.discovery-1.com/>.
2. Click the *Software Maintenance* link under the banner on the top of the page. The Sign In page opens.
3. Enter your Discovery-1 System ID in *the System ID* field and click *Sign In*. The Software Maintenance page opens (If you do not know your System ID, open Discovery-1 and select About MetaMorph from the Help menu to view the System ID).
4. Click the latest software maintenance release link and follow the instructions underneath the links to download and install the software update. The Installation instructions are also shown below.

Installing the Software Update

Complete the following steps to install the software update:

1. Open the Meta Imaging Series Updater utility located in the Meta Imaging Series folder on your desktop. The Meta Imaging Series Updater opens.
2. Click *Select Software Update* and browse to the zip file you saved in the *Downloading the Latest Software Update* section of this document.
3. Highlight the file and click *Open*.
4. Click *Next*, then *Update* to install the update.
5. When the update is complete, the message "Success! All files installed" is displayed.
6. Click *Close*.

Activating the Module(s)

Complete the following steps to activate the new module(s)

1. Open the Meta Imaging Series Administrator utility located in your Meta Imaging Series folder on your desktop
2. If you are in Single-User mode, select the group whose drop-ins you want to install and click *Configure Drop-ins/Toolbars*.

OR

If you are in Multi-User Mode, select the group or user whose drop-ins you want to install, click either *Edit Group* or *Edit User*, depending on whether you want to apply changes to the group or to a specific user, then click *Configure Drop-ins/Toolbars*. The Configure Drop-ins/Toolbars dialog box opens.

3. Ensure that the *Drop-ins* tab is selected and the *Special* is checked in the *Category* field.
4. Locate the new module(s) to install from the *Drop-ins* list and check the box next to it (examples of Discovery-1 Application modules include countnuclei, translocation, translocationenhanced, and livedead).
5. Click *OK* to close the Configure Drop-ins/Toolbars dialog box.
6. Click *OK* to close the Meta Imaging Series Administrator.

The module(s) you enabled will now be available from the Apps menu of the Discovery-1 application.