

## Dialog Box Appearance

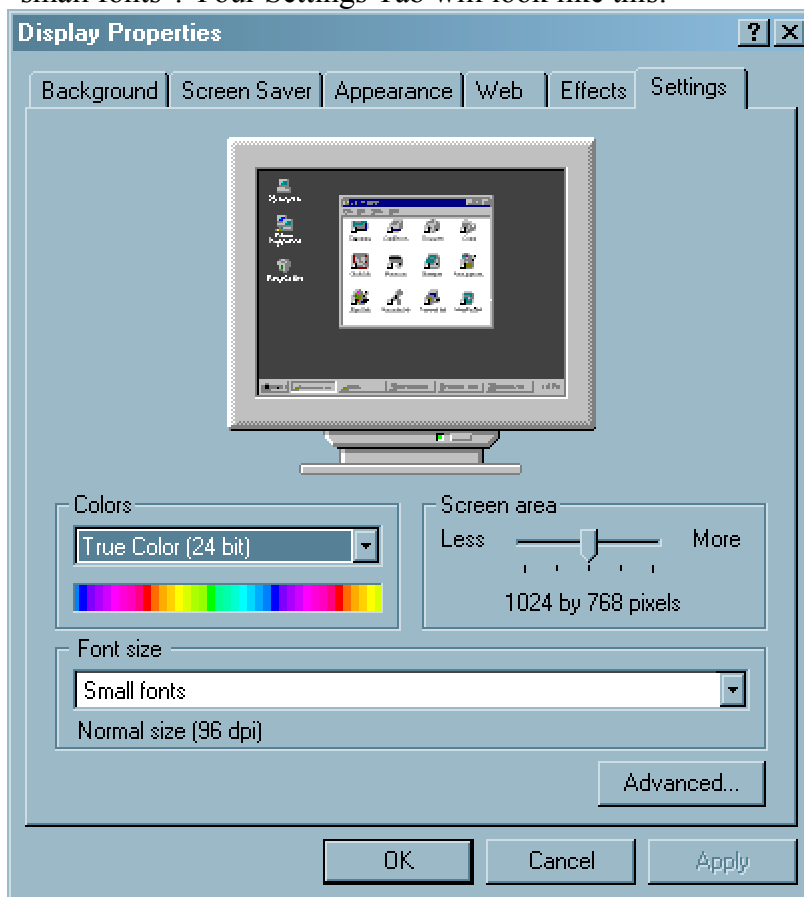
### Abstract

Use the following tips to make sure that all of the controls in dialog boxes in the Discovery-1 software are formatted correctly.

### Instructions

The font size contributes greatly to how controls and text are laid out in dialog boxes. If the font size is different from the standard, then dialog boxes may appear with controls misplaced or sized too large, and text may spill out the end of the dialog box or control containers. To prevent this, please follow these steps:

- Using the "Display" control panel, go to the Settings Tab and set your Desktop area to 1024x768 resolution, set your Color palette to "true color" (either 24-bits or 32-bits) and set your Font size to "small fonts". Your Settings Tab will look like this:



- Again using the "Display" control panel, go to the Appearance Tab and select "Icon" in the Item list. The important characteristics for the "Icon" item are that the Font must be MS Sans Serif and the font Size must be 8. These items are used internally by the Discovery-1 software to set the

**Keywords:** discovery-1 software reference

**Issue Type:** geninfo admn

**Document ID**  
D10211

**Product**  
Discovery-1 software

**Created**  
07-Jul-1999

**Last Reviewed**  
10-Jun-2003

arrangement of items in dialog boxes.

